



2021 NCMC CROSS COUNTRY SATURDAY OCTOBER

LOCATION: Kirksville Country Club
1115 Country Club Dr, Kirksville, MO 63501
PLEASE advise fans and athletes that EVERYONE must stay off the putting greens.

Entries: ONLINE ENTRIES SUBMITTED TO:
<https://mo.milesplit.com/meets/447263/registration>
Entries are due no later than 10/15/2021 at 9:00 AM

Entry Fee: High School - \$25 per gender or \$50 for both girls and boys teams
Junior High - \$25 per gender or \$50 for both girls and boys teams

Make checks payable to Kirksville High School and mail to:
Activities Department % Sara Williams

Time Schedule: 9:00am - Junior High Girls (3200 meters) - unlimited entries
9:30am - Junior High Boys (3200 meters) - unlimited entries
10:00am - Varsity Boys (5,000 meters) - 7 entries
10:30am - Varsity Girls (5,000 meters) - 7 entries
11:00am - JV Girls and Boys (combined) - unlimited entries
***If there is inclement weather the day of the race, we will use a rolling schedule.**

Awards: Top 10 Middle School runners will medal in each race. Score top 5 from each team.
Medals for top boys and girls team (7 runners)
Top 14 HIGH SCHOOL VARSITY boys and girls will be All Conference
Plaque for top boys and girls team
**Individual medals will be passed out as runners finish in the chute.*
**Team awards will be handed out once the results are known.*

Meet Results: Results will be posted on the TRXC website immediately after the races.

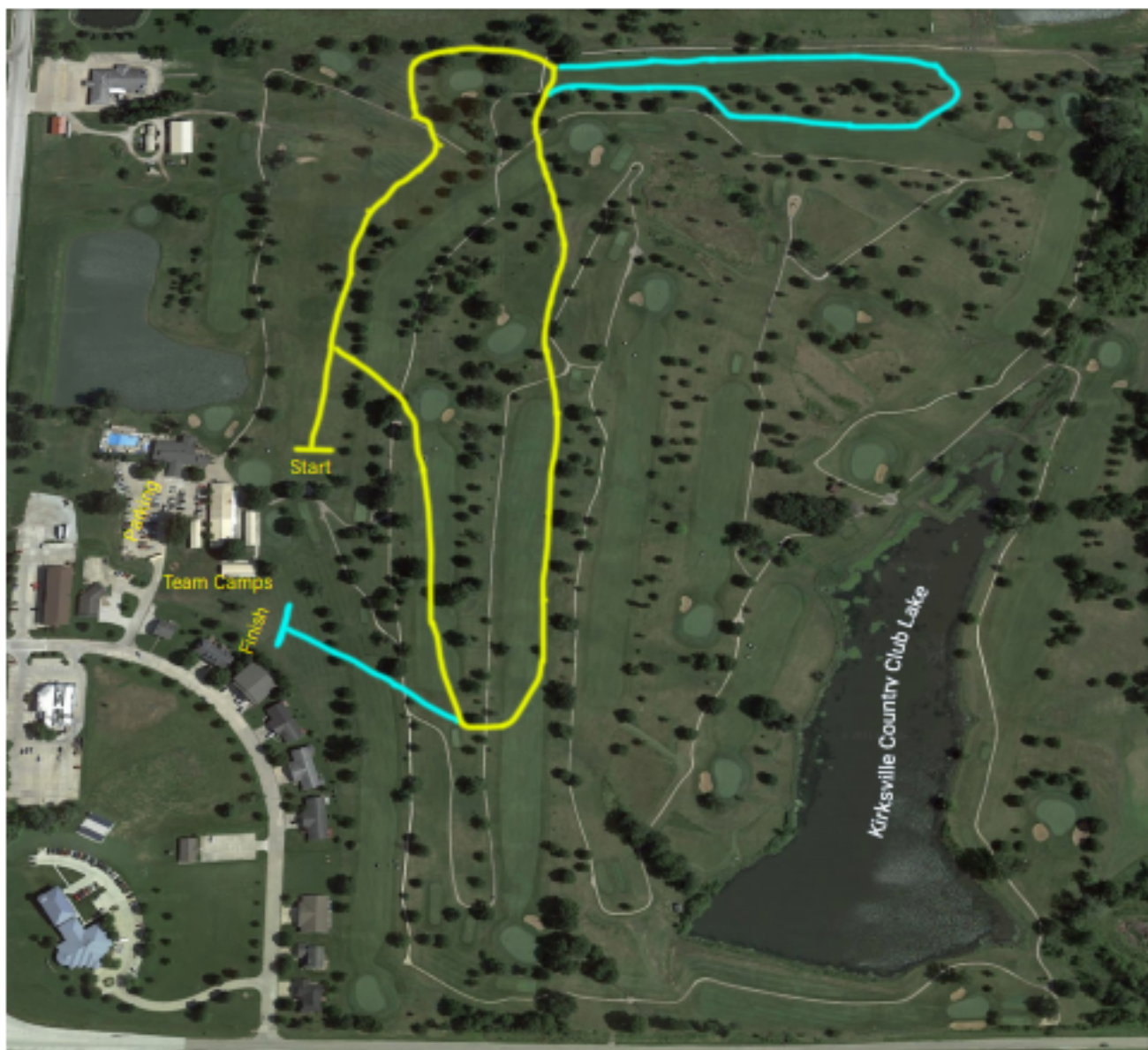
Facilities: Bathrooms will be available (Port-a-Potties located in the Country Club's parking lot)

Buses: Buses can drop off the athletes in the parking lot of the Kirksville Country Club. **Buses will then park at the big lot located across Highway 63 to the west.**

General Parking: Handicapped drivers may park in the Country Club's parking lot. All other drivers must park in the big lot located across Highway 63 to the west. **Please warn spectators to exercise caution when crossing Highway 63.**

Meet Questions: Head Coach - Ethan Gabel - egabel@kirksville.k12.mo.us
Activities Director - Sara Williams - swilliams@kirksville.k12.mo.us (660-341-6839)

Entry Questions: Rich Schilling - rich@trxctiming.com - (314-522-6176)



Varsity/JV Race - 3 Loops

- 1 - Yellow (Start)
- 2 - Yellow - Blue - Yellow (Start)
- 3 - Yellow - Blue - Yellow - Blue (Finish)

Middle School Race - 2 Loops

- 1 - Yellow (Start)
- 2 - Yellow - Blue - Yellow - Blue (Finish)

Course will be marked clearly with flags and officials will be in transition areas between Yellow/Blue changovers.

Start of race will be on the driving range.

Finish of race will be area south of cart sheds near team camps.

Team Camps will be allowed near the finish line area.